

# The Softkey Smash 100

The Softkey Smash 100 Windows(tm) Games CD-ROM is made from shareware and freeware games.

Technical Support by Support Solutions (900)555-7827  
World Wide Web page: <http://www.softkey.com>

[To run a game from the disc](#)

[To install a game from the disc](#)

[If you receive a cannot copy \\*.vbx or \\*.dll message](#)

[Manual Install of the Smash 100 Program](#)

Helpfile generated by VB HelpWriter.

# Installing Programs

Click the install button and accept the default directory. The program will be installed and the icon will be placed into your program manager (or Start Menu) under the Smash 100 group.

[Return to Contents](#)

Helpfile generated by VB HelpWriter.

# VBX / DLL Correction

Installation Problems.

All references to C: refer to the drive where windows is installed. D: refers to your CDROM drive.

If during installation or operation of the SMASH100 program you encounter "cannot copy", "Invalid property", or "Invalid file format" messages or any other problems, please perform the following steps.

1. Exit Windows
2. At the DOS prompt enter the following commands:

```
copy c:\windows\*.vbx c:\windows\system
erase c:\windows\*.vbx
```

3. (optional) type: dir c:\\*.vbx /s /p

Locate all vbx files and copy them to the windows\system directory then delete them from the original location.

4. Restart windows and reinstall the Softkey 100 Smash Windows Games CDROM by choosing file/run from Program Manager or File Manager and type  
d:\setup

In addition, some programs copy VBRUN300.DLL and other VBX files to other areas besides Windows\System directory. It is advisable to search your entire machine for VBRUN300.DLL and delete any occurrence not in your windows\system directory before installing Softkey 100 Smash Windows Games.

This can be done by using the FileManager's search under File\Search.

[Return to Contents](#)

Helpfile generated by VB HelpWriter.

# Run From Disc

To run a program from the Smash 100 disc you must first verify that the RUN button is available.

With the CD-ROM inserted in your drive, select the game you wish to preview and press the run button, or icon to start it.

**NOTE:** You will be unable to save any custom settings, high scores, or player information until you have installed the game to your hard drive.

[Return to Contents](#)

Helpfile generated by VB HelpWriter.

# Manual Install

In the unlikely event that the setup routine fails, manual installation can be done by the following instructions: [Remember, this is ONLY as a last resort, and should not be done until ALL other options have been tried and have failed.]

1. EXIT WINDOWS
2. At the dos prompt ( C:\> ) type:

```
C:\> CD \  
C:\> MD \SMASH100  
C:\> COPY D:\SMASH100\*. * C:\SMASH100  
C:\> COPY D:\SMASH100\SYSTEM\*. * C:\WINDOWS\SYSTEM  
C:\> COPY D:\SMASH100\SMASH100.INI C:\WINDOWS  
C:\> COPY D:\SMASH100\SMASH100.HLP C:\WINDOWS
```

3. If your CDROM drive is not "D:" then edit the SMASH100.INI and change the line "Path=D:\ " replacing D: with your drive i.e. "Path=E:\ "

```
C:\> EDIT C:\WINDOWS\SMASH100.INI
```

4. Restart Windows and create a Smash 100 group and icon in Program Manager by following the instructions below:
  - a. From the Program Manager menu, select File then New
  - b. Select Program Group option and click Ok.
  - c. In the Group Name type: Smash 100
  - d. Click Ok to create the group.
  - e. From the Program Manager menu, select File then New
  - f. Select Program Item option and click Ok.
  - g. In Description, type: Softkey 100 Smash Windows Games
  - h. In Command Line, type: C:\SMASH100\SMASH100.EXE
  - i. In Working Directory, type: C:\SMASH100
  - j. Click OK to create the Icon.

[Return to Contents](#)

# Smash100 INI file

Sample SMASH100.INI file

[Content]

file=c:\smash100\smash100.lst

path=d:\

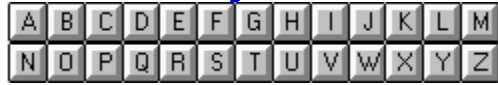
[Machine]

Home=c:\smash100

[Return to Contents](#)

Helpfile generated by VB HelpWriter.

# Glossary



**A**  
available

**available**

If the button labeled "RUN" is not greyed out it is available.





